

NAVARRO COUNTY COMMISSIONERS COURT
ORDER NO. 2024-06

On the 13th day of May, 2024, the County Commissioners Court of Navarro County, Texas, convened in Special Session of the said Court, at 300 West 3rd Ave., Corsicana, Navarro County, Texas, with the following members present, to wit:

County Judge	H. M. Davenport, Jr.
Commissioner, Precinct 1	Jason Grant
Commissioner, Precinct 2	Eddie Perry
Commissioner, Precinct 3	Eddie Moore
Commissioner, Precinct 4	David Brewer

and among other proceedings, on Motion of Commissioner Perry, seconded by Commissioner Brewer, being duly put and carried, the following Order was passed.

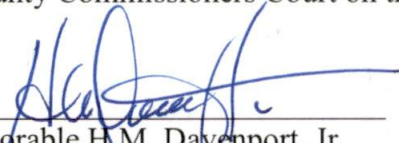
WHEREAS, Chapter 251 of the Texas Transportation Code authorizes the County Commissioners Court to close, abandon, and vacate certain identified county roads or portions of roads; and

WHEREAS, on May 13, 2024, the Navarro County Commissioners Court has closed upon request S.E.C.R. 4250-said road as being the same as in the attached Exhibit "A" approximately 386 feet. This road is to be closed, abandoned, and vacated pursuant to the terms of Chapter 251 of the Texas Transportation Code:


Now therefore, BE IT ORDERED by the Commissioners Court of Navarro County, Texas that S.E.C.R. 4250 or more specifically, portions of said road as noted above is hereby **CLOSED, ABANDONED, AND VACATED**.

BE IT FURTHER ORDERED that this Clarification Order is officially filed with the Navarro County Clerk, as is required by law.


APPROVED by the Navarro County Commissioners Court on this 13th day of May, 2024.



Honorable H.M. Davenport, Jr.
Navarro County Judge




Jason Grant
Commissioner, Precinct 1



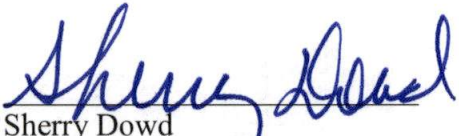
Eddie Perry
Commissioner, Precinct 2

Eddie Moore
Commissioner, Precinct 3



David Brewer
Commissioner, Precinct 4

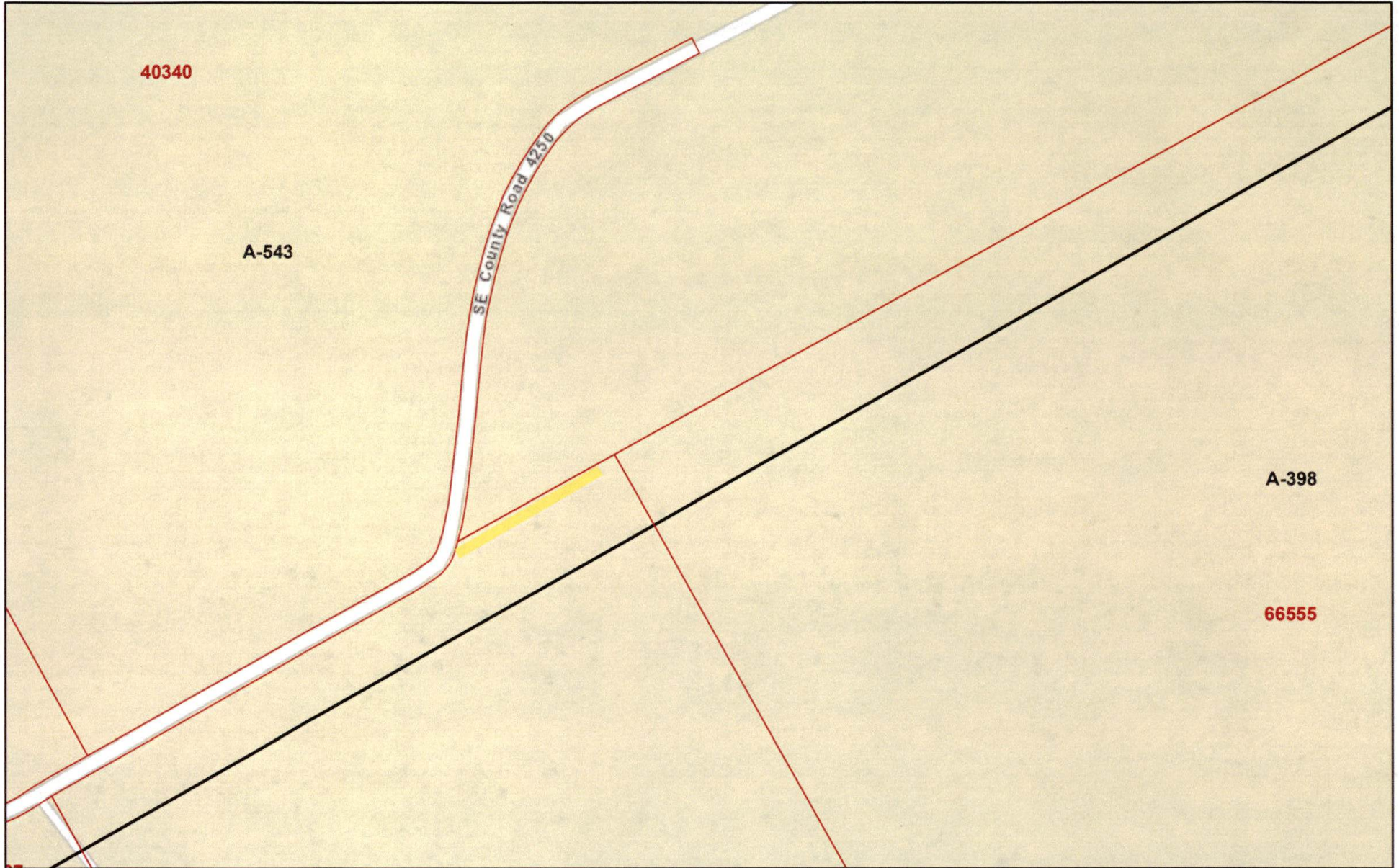
ATTEST:



Sherry Dowd
Navarro County Clerk

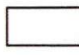


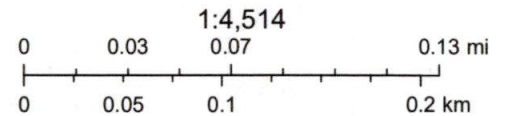
Navarro CAD Web Map



5/7/2024, 3:26:03 PM

 Parcels

 Abstracts

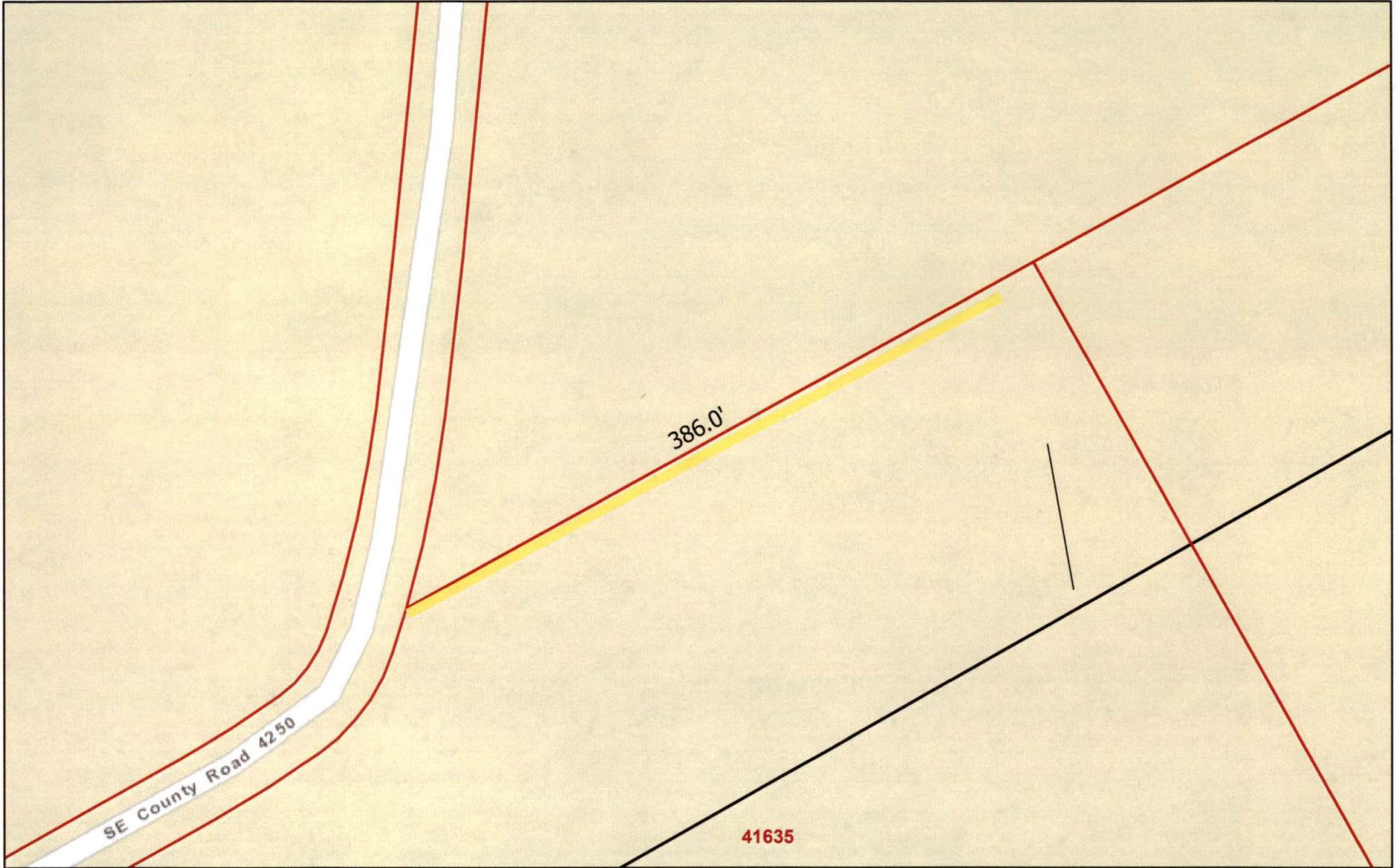


Esri, HERE, Garmin, INCREMENT P, NGA, USGS


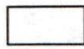
Navarro County Appraisal District, BIS Consulting - www.bisconsulting.com

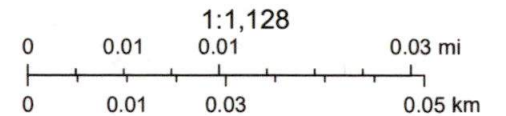
Disclaimer: This product is for informational purposes only and has not been prepared for or be suitable for legal, engineering, or surveying purposes. It does not represent an on-the-ground survey and represents only the approximate relative location of boundaries.

Navarro CAD Web Map



5/7/2024, 3:17:41 PM

-  Parcels
-  Abstracts



Esri, HERE, Garmin, INCREMENT P, NGA, USGS


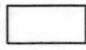
Navarro County Appraisal District, BIS Consulting - www.bisconsulting.com

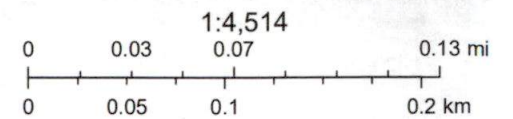
Disclaimer: This product is for informational purposes only and has not been prepared for or be suitable for legal, engineering, or surveying purposes. It does not represent an on-the-ground survey and represents only the approximate relative location of boundaries.

Navarro CAD Web Map



5/7/2024, 3:24:53 PM

-  Parcels
-  Abstracts



© OpenStreetMap (and) contributors, CC-BY-SA


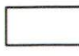
Navarro County Appraisal District, BIS Consulting - www.bisconsulting.com

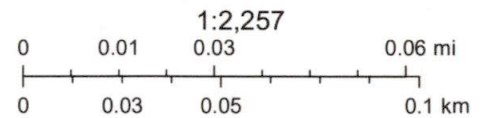
Disclaimer: This product is for informational purposes only and has not been prepared for or be suitable for legal, engineering, or surveying purposes. It does not represent an on-the-ground survey and represents only the approximate relative location of boundaries.

Navarro CAD Web Map



5/7/2024, 3:23:40 PM

-  Parcels
-  Abstracts



© OpenStreetMap (and) contributors, CC-BY-SA

Navarro County Appraisal District, BIS Consulting - www.bisconsulting.com

Disclaimer: This product is for informational purposes only and has not been prepared for or be suitable for legal, engineering, or surveying purposes. It does not represent an on-the-ground survey and represents only the approximate relative location of boundaries.

POSTED: Mon March 25- 2024

ROAD CLOSING PETITION

THE FOLLOWING RESIDENTS OF PRECINCT 2, NAVARRO COUNTY TEXAS, REQUEST CLOSING OF COUNTY ROAD OR PORTION OF COUNTY ROAD (please circle one) SE- 4250. THE ABOVE PART MENTIONED BEGINS AT Just Past Tarrant County Water District Gates AND EXTENDS FOR 386 MILES OR FEET (please circle one) TO To The End of The Road. THE LENGTH OF THE ROAD (OR PORTION OF ROAD) TO BE CLOSED IS 386 Feet.

1. Janet Smith
2. [Signature]
3. Carolee Cundiff
4. [Signature]
5. _____
6. _____
7. _____
8. _____

OPPOSE CLOSING OF ROAD SIGN BELOW

1. _____
2. _____
3. _____